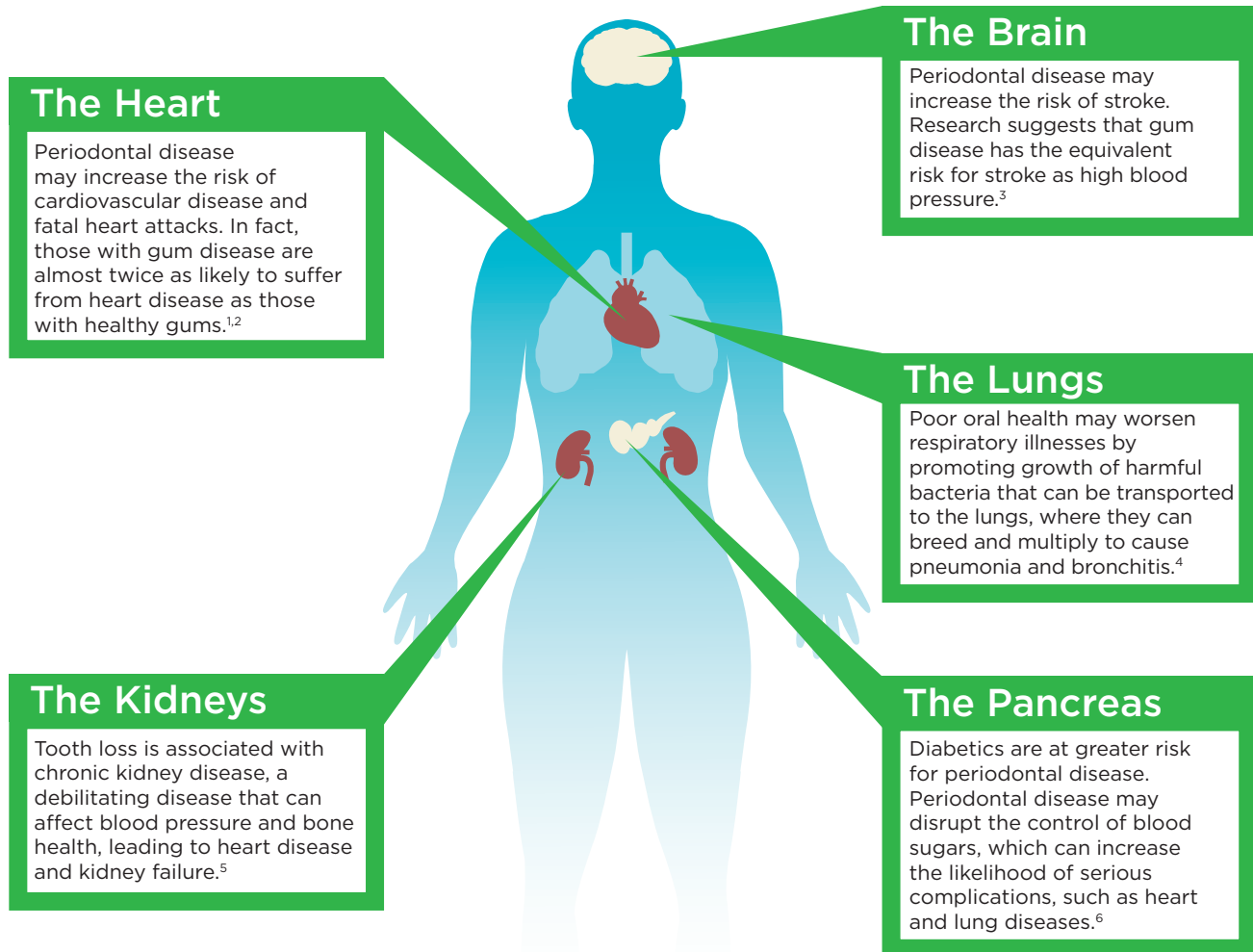




Northeast Delta Dental's industry-leading
Health *through* Oral Wellness® program —
Powered by the PreViser® risk assessment tool.
Giving your patients the preventive care they need.

Oral health affects overall health.

Health *through* Oral Wellness® supports good oral health.



For Women

Mothers-to-be are more likely to have a preterm birth when they have periodontal disease than those that have healthy gums.⁷

Women who have periodontal disease also have a higher incidence of breast cancer.⁸



Fast Facts

Tooth decay is the most prevalent chronic disease in both children and adults, even though it is largely preventable.⁹

Periodontal disease is the most common cause of tooth loss among adults.¹⁰

47.2% of adults aged 30 years and older and 70.1% of adults 65 years and older have some form of periodontal disease.¹¹

Sources:

1. www.cardiosmart.org/News-and-Events/2016/01/Gum-Disease-Linked-to-Increased-Risk-for-Heart-Attack.
2. www.perio.org/consumer/gum-disease-and-heart-disease.
3. www.medicalnewstoday.com/releases/221159.
4. www.perio.org/consumer/other-systemic-diseases.

5. www.perio.org/consumer/kidney-disease.
6. www.perio.org/consumer/diabetes.htm.
7. www.perio.org/consumer/AAP_EFP_Pregnancy.
8. www.ncbi.nlm.nih.gov/pubmed/20960226.
9. www.nidcr.nih.gov/research/data-statistics/dental-carries.

10. www.nidcr.nih.gov/research/data-statistics/periodontal-disease.
11. www.cdc.gov/oralhealth/conditions/periodontal-disease.html.

Northeast Delta Dental's Health *through* Oral Wellness®...

Making the best dental coverage around *even better!*

Because providing your patients with the preventive dental benefits they need can help improve their oral and overall health!

Science continues to show the association of many chronic and serious medical conditions to a person's oral health. Signs and symptoms of more than 120 diseases—including diabetes and heart disease—appear in the mouth¹.

- ➡ **Periodontal Disease** can lead to the breakdown of bone that supports the teeth, as well as have a negative impact on both diabetes and cardiovascular disease.
- ➡ **Tooth Decay and Cavities** not only lead to painful toothaches, but also to bacterial infections and tooth loss.
- ➡ **Oral Cancer** often goes unnoticed by a patient and can lead to serious medical complications and even death.

“Americans lose more than 164,000 hours of work every year due to dental disease².”

Providing your patients and their families with the proper preventive dental benefits—based on their individual dental health needs—is very important. Early detection and treatment of these conditions typically make them easier and less costly to manage...and before they become problems that require time away from work!

This is where our **Health *through* Oral Wellness®** program comes in!

- ➡ Offers additional preventive benefits—at no extra premium—to those who need them.
- ➡ Intercepts disease by focusing on prevention.
- ➡ PreViser risk assessments are automatically connected to Northeast Delta Dental, and additional preventive benefits are activated immediately upon your patient receiving a qualifying risk score.
- ➡ The PreViser electronic, online, risk assessment tool is available to you at no cost.
- ➡ Comes with insightful reporting into the oral health of your patient population.
- ➡ Does not take the enhanced benefits away when a person's oral health improves; we want the person to maintain that improved oral health for life!
- ➡ Helps educate your patients about the importance of oral health and what they need to do to improve or maintain their health.
- ➡ Provides reports and scores that help motivate employees to stay compliant with your recommendations and their dental visits..

¹ Steven L. Bricker, Robert P. Langlais, and Craig S. Miller, *Oral Diagnosis, Oral Medicine and Treatment Planning* (Philadelphia: Lea & Febiger, 1994).

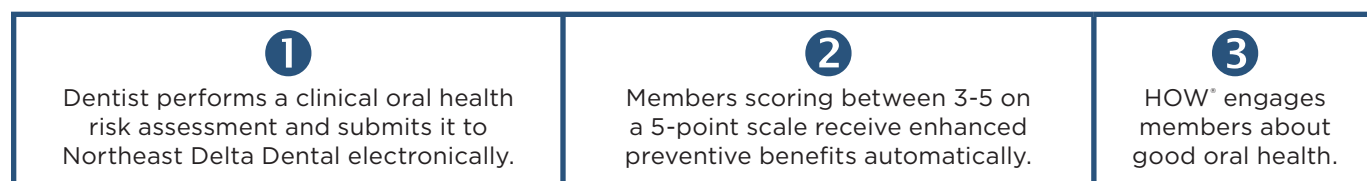
² www.ncbi.nlm.nih.gov/pmc/articles/PMC5772383, Hours Lost to Planned and Unplanned Dental Visits Among US Adults Uma Keletar and Shillpa Naavaal.

Health through Oral Wellness® (HOW®)

Summary of Enhanced Benefits*

Available for Northeast Delta Dental patients whose employer participates in the HOW® program. Patients meeting these criteria may qualify for Enhanced Benefits if they are determined to be at risk for caries and/or periodontal disease based on the results of a PreViser™ risk assessment performed in a dental office. Procedures limited in frequency during a 12-month period may be measured based on a calendar year or on a rolling 12-month period depending on the group policy.

Enhanced benefits are subject to change and are subject to standard policy provisions, including, but not limited to, coinsurance percentages, copayments, and plan maximums. As with all benefits, eligibility confirmation should be obtained via Northeast Delta Dental's Benefit Lookup site at www.nedelta.com or from customer service at 1-800-832-5700.



Oral Health Condition	Benefits	CDT Codes	Frequency
Caries <div style="border: 1px solid black; padding: 10px; margin: 10px 0;">Risk Score 3-5</div>	Caries Susceptibility Test Child Prophylaxis or Adult Prophylaxis or Scaling in the Presence of Gingival Inflammation Fluoride Varnish or Topical Fluoride Nutritional Counseling or Oral Hygiene Instruction Sealants	D0425 D1120/D1110 D4346 D1206/D1208 D1310 D1330 D1351	Once per 12 months Combination up to 4 per 12 months ³ Combination up to 4 per 12 months Once per 12 months ¹ Once per 12 months ¹ Once per 3 years ²
Periodontal Disease <div style="border: 1px solid black; padding: 10px; margin: 10px 0;">Risk Score 3-5 OR Gum Disease Score 4-100</div>	Child Prophylaxis or Adult Prophylaxis or Scaling in the Presence of Gingival Inflammation Nutritional Counseling or Tobacco Cessation Counseling or Oral Hygiene Instruction Full Mouth Debridement Periodontal Maintenance	D1120/D1110 D4346 D1310 D1320 D1330 D4355 D4910	Up to 4 per 12 months ³ Once per 12 months ⁴ Once per 12 months ⁴ Once per 12 months ⁴ Once in a lifetime ³ Up to 4 per 12 months ³

¹ Either one nutritional counseling or one oral hygiene instruction is covered in a 12-month period.

² Sealants are a covered benefit based on caries risk assessment for unrestored primary molars and for unrestored permanent premolars, molars; one sealant per tooth every three years.

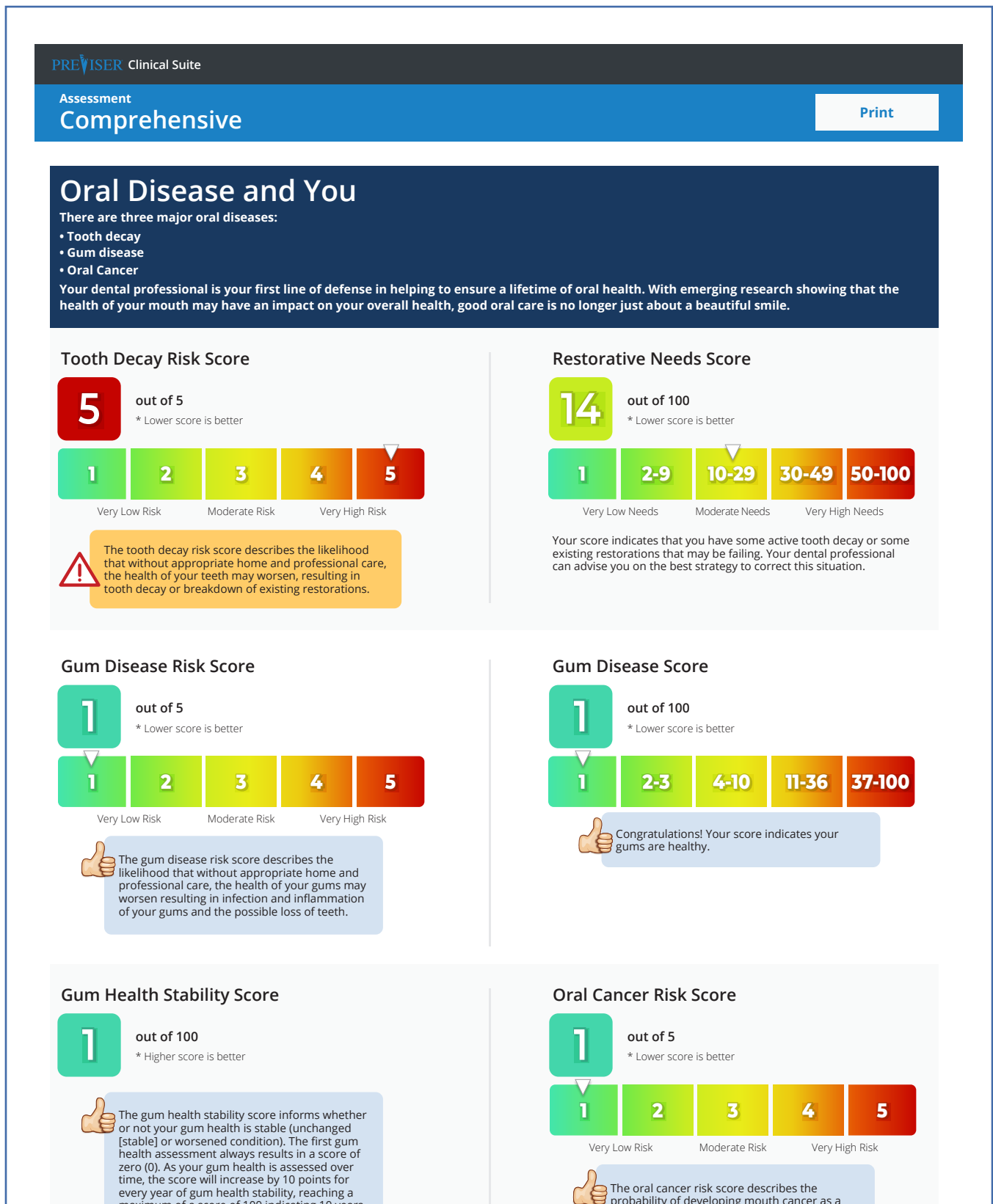
³ Combination of prophylaxis, periodontal maintenance, or full mouth debridement (once in a lifetime benefit) not to exceed four in a 12-month period.

⁴ Either one nutritional counseling, or one oral hygiene instruction, or one tobacco cessation counseling is covered in a 12-month period.

*Enhanced benefits are subject to change.

Comprehensive Risk Assessment

A Comprehensive Risk Assessment gives the patient an overview of their oral health with scores that can move up and down based on professional interventions and patient home care. Here is an example of a typical Assessment:



Contact Information

Health *through* Oral Wellness® (HOW®) Specialist: 1-800-537-1715, ext. 1339

To contract us by email: HOWinfo@nedelta.com

PreViser®: 1-888-854-0007

Northeast Delta Dental Customer Service: 1-800-832-5700

To access benefit lookup: www.nedelta.com/Providers

HOW® website: www.HealthThroughOralWellness.com

General PreViser® information and PreViser® University: www.previser.com

To complete a risk assessment: <https://secure.previser.com/clinical>



Better oral health leads
to better overall health...
and a happier, healthier patient.



HEALTH *through*
ORAL WELLNESS®

www.HealthThroughOralWellness.com